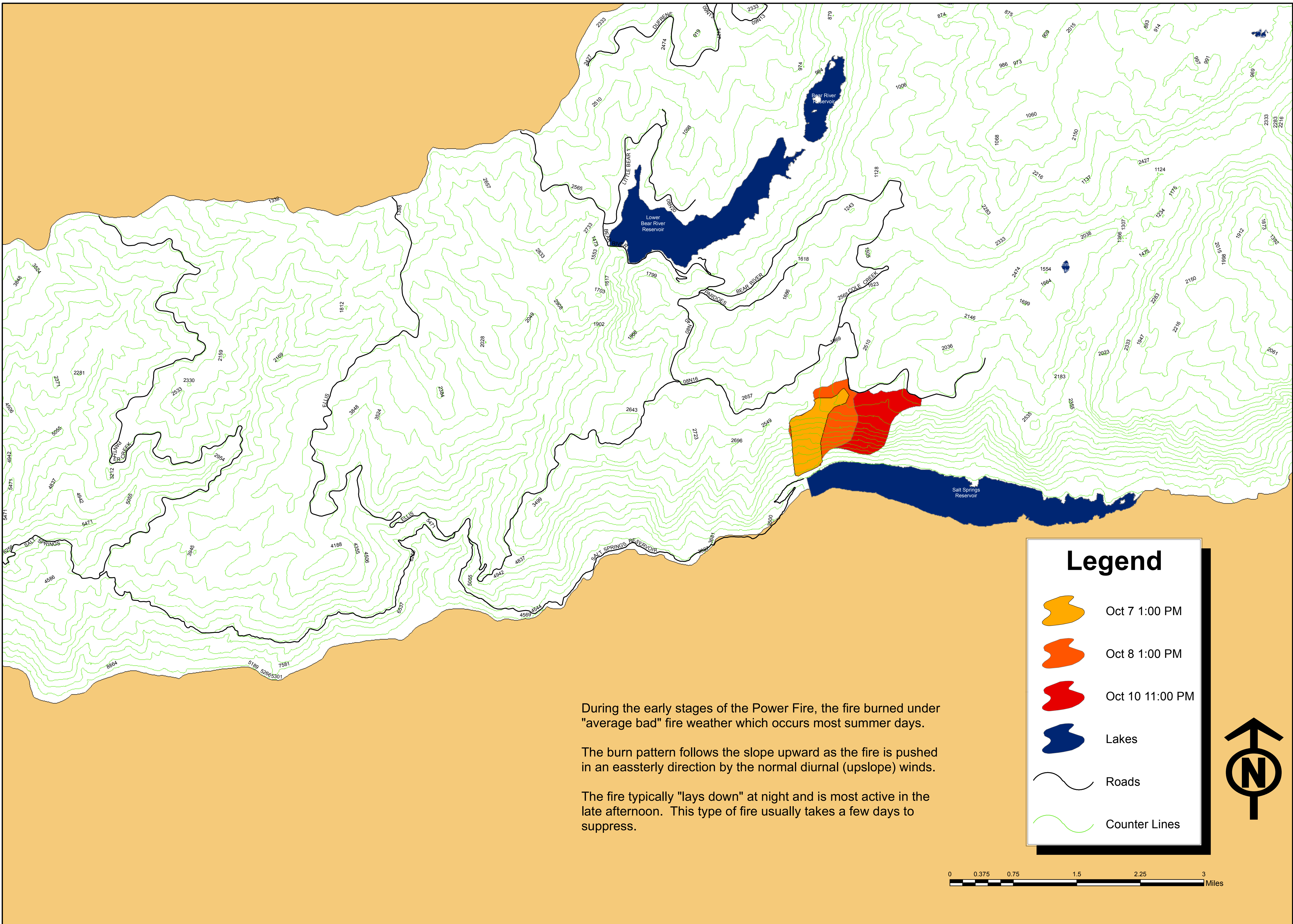


Plate 4 - Power Fire Progression Map (2004) Prior to Foehn Wind Event



During the early stages of the Power Fire, the fire burned under "average bad" fire weather which occurs most summer days.

The burn pattern follows the slope upward as the fire is pushed in an easterly direction by the normal diurnal (upslope) winds.

The fire typically "lays down" at night and is most active in the late afternoon. This type of fire usually takes a few days to suppress.

Legend

-  Oct 7 1:00 PM
-  Oct 8 1:00 PM
-  Oct 10 11:00 PM
-  Lakes
-  Roads
-  Counter Lines

